



EU-DOCS FOR SMUCS DOCTORAL PROGRAMME

MSCA COFUND

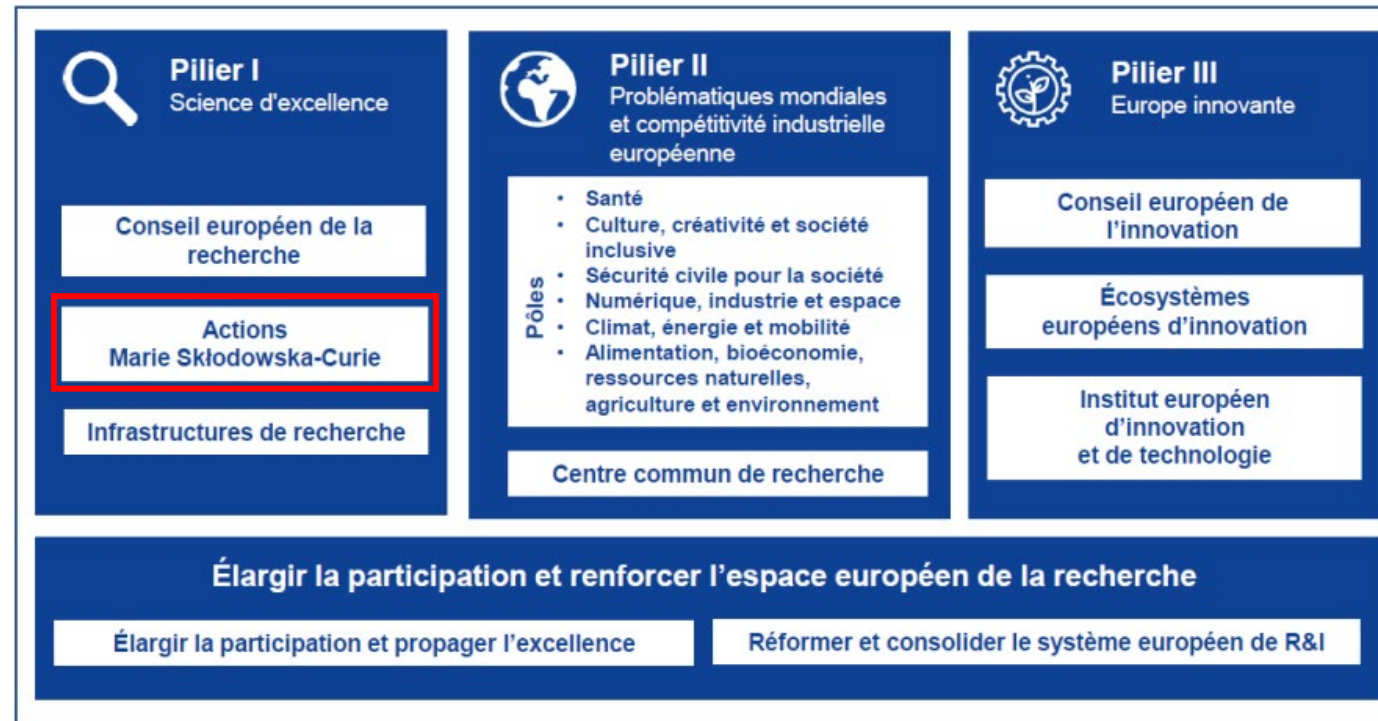


Co-funded by
the European Union



MSCA COFUND « EU-DOCS FOR SMUCS DOCTORAL » PROGRAM

- + Project developed by La Rochelle Université as part of the COFUND call for projects under the Marie Skłodowska-Curie Programme



MSCA COFUND « EU-DOCS FOR SMUCS »

MAIN ASPECTS OF THE PROGRAM

- + **European interdisciplinary doctoral program** with a challenge driven approach related to **Smart Urban Coastal Sustainability**
- + **17 PhD students** (36 months thesis) – 2 calls
- + **Cotutelles** between LRUniv and a foreign university
 - > Minimum 24 months at LRUniv
 - > 6 to 9 months at the academic partner
 - > Co-supervised by 2 professors who elaborate a thesis subject and ensure supervision
- + A **3 month secondment** with a **non academic partner**
- + Special attention to **individual follow-up and career guidance**, based on EU-CONEXUS and specific services (Career Development Plan)

→ **Creating a generation of excellent researchers** with international outreach, ready to contribute to global SmUCS economic and societal challenges, consolidating scientific cooperation.

→ **Paving the way for a consolidated EU-CONEXUS doctoral school** (programme and services, supervision and recruitment methods, CDPs).

ELIGIBILITY CRITERIA OF THE SUBJECT

- + The co-director (outside La Rochelle Université) is a person attached to a **university capable of awarding a doctoral degree**.
- + All partners must provide a **5000€ financial contribution** (per thesis) to LRUniv to be used by the PhD candidate as a Mobility allowance (part of the salary). A **letter of commitment** must be completed and signed by the rector, vice-president for Research or president of the partner institution, as well as by the thesis co-director to secure payment of the grant.

*With this letter, the partner institution undertakes to pay La Rochelle Université the sum of **5000€ (mobility grant)**, agrees with the **duration of the secondment (3 months)**, the **duration of the cotutelle (6 – 9 months)**, and the total **duration of the thesis (36 months)**. Without this letter of commitment, the subject will not be accepted.*

- + The subject meets the program's objectives: quality of the subject, response to the challenges of the **Smart Urban Coastal Sustainability (SmUCS)**.
- + **Doctoral supervision** is validated by the doctoral schools of both institutions.
- + The **research project** is approved by the heads of both research laboratories to which the two supervisors are affiliated.
- + The subject complies with **European Union rules** on research ethics.
- + The subject identifies a **non-academic partner** for the 3-month secondment.

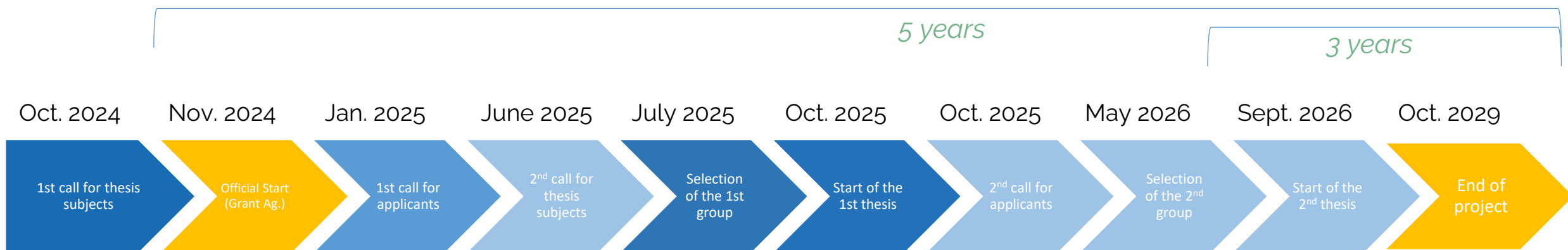
NON-ACADEMIC PARTNERS – 3 MONTHS SECONDMENTS

12 ASSOCIATED PARTNERS

Non-academic partner	Country
Port Atlantique La Rochelle	France
Alstom	France
Plateforme TIPEE	France
District 2, Municipality of Bucharest (PS2)	Romania
Platforma 22	Croatia
ISOTECH	Cyprus
Southern Regional Assembly	Ireland
Port of Waterford	Ireland
ProtoQSAR	Spain
MATCH Biosystems	Spain
MOLDRUG	Spain
PHARMAQUA	Greece

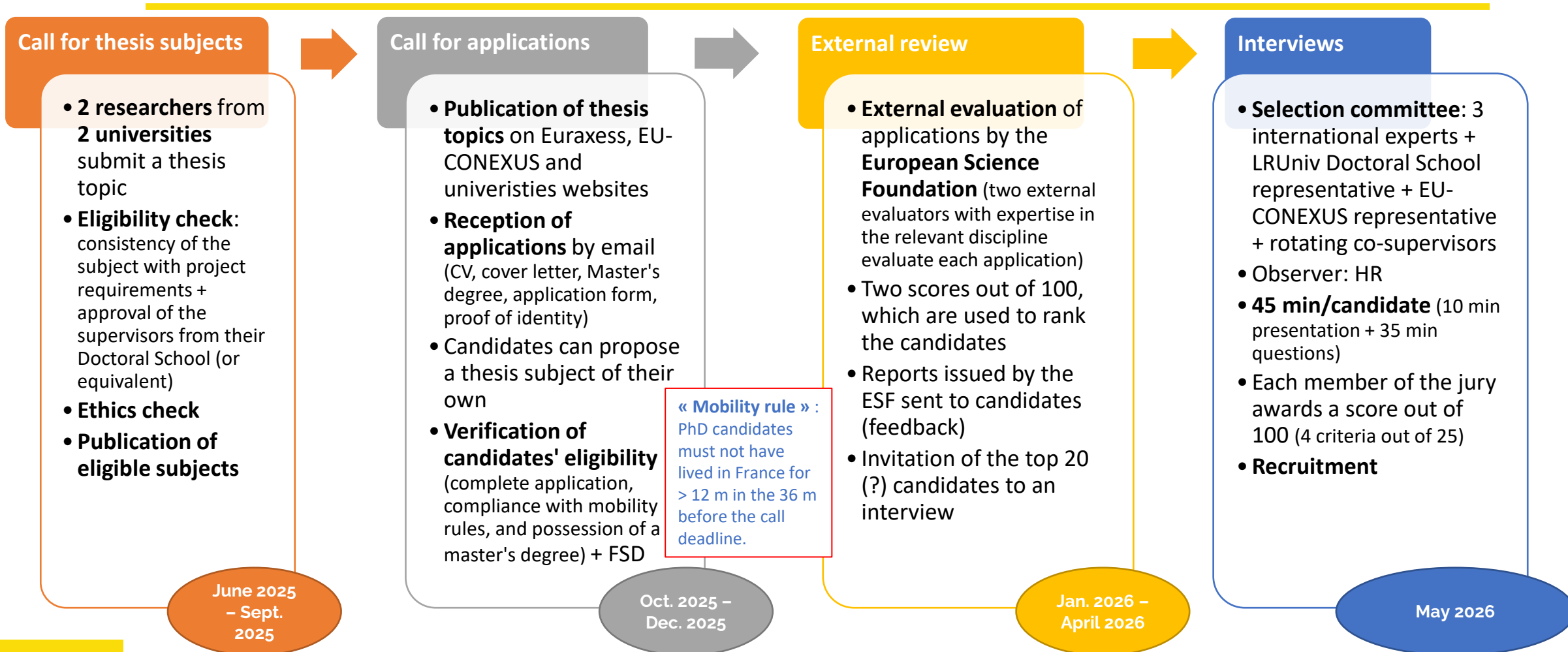
- + **Non-academic partners** can be chosen from the list of partners in the EU-DOCS for SmUCS project.
- + No financial contribution.
- + The non-academic partner must be identified in the cotutelle subject.
- + The list may be extended depending on the relevance of the secondment to the doctoral student's thesis topic.
- + If you need help identifying a non-academic partner, please contact: eudocs_cofund@univ-lr.fr or campusinnov@univ-lr.fr.

CALENDAR OF THE PROJECT



2 calls (5 + 12 = 17)

SELECTION PROCESS



BUDGET FOR EACH PHD STUDENT

- + **Salary** (employer's cost)
 - > 137 204€ for 36 months: Funding from 1) Europe (COFUND) + 2) PIA ExcelLR (15 students) & EU-CONEXUS (2 students)
 - > 10 000€ mobility allowance (5000€ from LRUniv + 5000€ from partner Univ)

- + Two dedicated **budget lines** opened for the PhD student in LRUniv to spend on:
 - > Research: 3000€
 - > Other (training, mobility) : 3000€
 - > *NB: the research and working environment are provided by LRUniv & the partner Univ*

- + The **EU-DOCS for SmUCS programme** also finances:
 - > On-boarding event
 - > One participation in an EU-CONEXUS **Summer School** (end of 1st year)
 - > One mobility to an EU-CONEXUS **Research Conference** (2nd or 3rd year)

HOW TO FIND A COTUTELLE PARTNER ?

- + [EU-CONEXUS Research Information and Innovation System \(RIIS\)](#)
- + [La Rochelle Université Research Units](#)
- + Have a look at Scopus, Science Direct, HAL...
- + EU-CONEXUS Project Development Support Office (projects@eu-conexus.eu)
- + Our generic address: eudocs_cofund@univ-lr.fr

QUESTIONS & ANSWERS

TIME FOR QUESTIONS !

NOW IF YOU WANT YOU CAN PITCH YOUR THESIS SUBJECT !!



univ-larochelle.fr