

Agro-ecology / Contaminants / Conservation /
Demography / Functional ecology



Centre d'Études Biologiques de Chizé (CEBC)

Located in the Deux-Sèvres department in the heart of the Chizé forest, the laboratory CEBC's research focuses on the effects of global environmental changes on terrestrial and marine biodiversity, as well as conservation solutions. This research involves long-term observatories, in situ or laboratory experiments, and participatory sciences.

Disciplines—Ecology. Agro-ecology. Bio-logging. Physiology. Genetic. Statistics and modeling. Eco-toxicology.

Director—**Charles-André BOST**

Scientific DUA—**Olivier CHASTEL**

Administration DUA—**Charline PARENTEAU**

Permanent research staff—**22**

Doctorantes et doctorants—**20**

Phd students—**18**

Staff on research project—**25**

—**3 teams**

- ▶ Ecophy
- ▶ Marine Predators
- ▶ Résilience



Societal challenges

Conservation

The CEBC is involved in the conservation of terrestrial and marine biodiversity. It conducts long-term monitoring studies, and programs of reintroduction or protection of threatened species.

Climate

Climate change disrupts the dynamics of many animal species, in particular birds and marine mammals. CEBC, monitors population trends of numerous species, as well as their adaptive capacities thanks to unique and unprecedented long-term data time-series.

Agriculture

CEBC's research studies the effects of agricultural activities on biodiversity, on the roles of biodiversity in agricultural production, and on its link with the economic performance of farms.

CEBC also develops a research-intervention program to recreate the link between producers and consumers, and to jointly explore solutions to transform the current agricultural model.

Human activities

Quantifying and understanding how human activities disrupt natural environments and the living beings they support is one of the CEBC's priority research areas.

Adaptation

At the crossroads between ecology and physiology, the CEBC studies how environmental disturbances (climate change, pollution, habitats destruction, overfishing) impact the functioning of organisms and their capacity to adapt.

Sustainability

CEBC seeks to develop methods for efficient management of terrestrial and marine ecosystems, while reconciling resource exploitation and biodiversity conservation.



— Research networks

CEBC collaborated with numerous laboratories, institutes and universities in France and abroad. Thanks to its biological analyses platform and its experimental systems, CEBC has the capacity to work on a large number of animal models.

For example, CEBC manages one of the 14 national long-term research projects on socio-ecosystems: the Plaine & Val de Sèvre Research Area. This 450km² territory is the site of interdisciplinary research conducted by teams from the CNRS, INRAE and various universities, with the participation of socio-economic stakeholders.

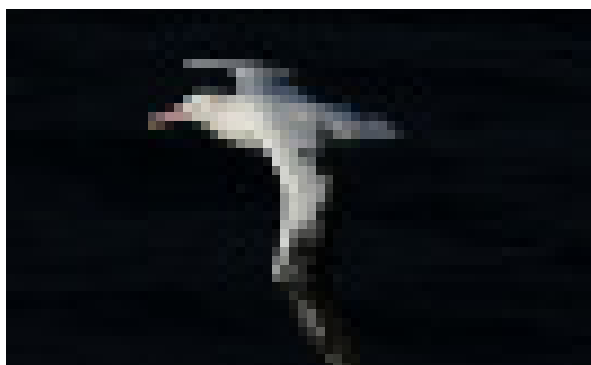
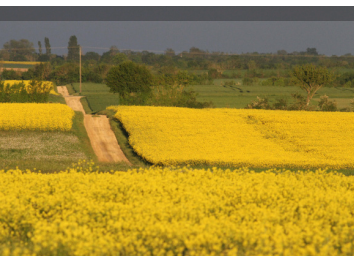


— Expertises Achievements

CEBC is conducting experiments locally with farmers in the Plaine & Val de Sèvre Research Area to develop agro-ecological methods based on nature-based solutions. It implements agro-environmental measures within the Natura 2000 framework with the goal of biodiversity conservation. Thanks to its biological analysis platform, CEBC studies the physiological consequences of human activities on wildlife (e.g. endocrine disruption).

Finally, in the Southern Ocean, it quantifies the mortality caused by fisheries on seabirds and marine mammals and proposes

new measures to mitigate it. Recognized for its ability to combine the protection of biodiversity with the sustainable management of natural resources, CEBC provides expertise to large-scale regional projects or the construction of offshore wind farms.



Training

MASTER IN ENVIRONMENTAL SCIENCES (SPE)

- ▶ programme Coastal Geosciences and Geophysics
- ▶ programme Environmental Management and Coastal Ecology

CEBC also participates in training courses on :

- > DU in Wildlife, Nature and Environmental Documentary filmmaking and DU in Nature and Environmental Photography (in partnership with IFFCAM)
- > CEBC also participates in training courses on the Utilisation of Wildlife for Scientific Purposes.

— Partnerships Collaborations



CEBC has two supervisory bodies, the CNRS and La Rochelle University, and is associated with the INRAE.

It works with local authorities (the Deux-Sèvres Departmental Council and the Nouvelle Aquitaine Region) and national institutions (including the Ministry of Ecology, Sustainable Development and Energy). Its research is conducted in partnership with French public institutions (including the French Office of Biodiversity, ONB) as well as institutions abroad.

CEBC also collaborates with the Zoodyssée animal park, several nature protection associations and training institutes (IFFCAM) to promote conservation of endangered species.



CONTACT

**Centre d'Études
Biologiques de Chizé**

UMR 7372

▶ 405 route de la canauderie - 79360 Villiers-en-Bois, France

+33 (0)5 49 09 61 11 directeur.chize@cebc.cnrs.fr



cebc.cnrs.fr

Communication correspondent
cecile.ribout@cebc.cnrs.fr